

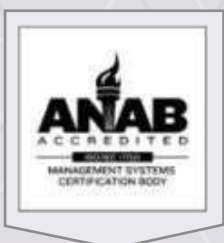


# PLASTIC DESIGN INDUSTRIES

Custom Fabricated Plastic Systems

for Cleanroom & Controlled Environments

SINCE 1976



 PLASTIC FABRICATION

 FM 4910 MATERIAL

 ENGINEERED SYSTEMS

 MADE IN USA



# Catalog Overview

---

## **01** Company Overview

- About Plastic Design Industries
- Markets we serve
- Quality compliance & Clean room Standards
- Material options

## **03** Fume Hoods

- Facility Components
- PPE/ Gowning

## **06** Case Work

## **28** Clean Room Essentials

- Facility Components
- PPE/ Gowning

## **45** Material Handling

- Carts and Dollies
- Carts

## **48** Contact



# COMPANY OVERVIEW

## About Plastic Design Industries

Founded in 1976, Plastic Design Industries, LLC, (“PDI”, formerly Plastic Design Inc.), works closely with customers to optimize equipment and process challenges through innovative, well-engineered solutions. Utilizing the unique properties of today’s plastic materials, the company supplies systems and products for industries ranging from biomedical and pharmaceutical to microelectronics and photonics. With advanced automated fabrication equipment and expert computer-aided design capabilities, Plastic Design Industries can supply production volumes ranging from one-off prototypes to full-scale manufacturing runs. PDI employs a team of engineers with backgrounds in mechanical and chemical engineering. Whether the need is a simple bio-isolation chamber, a fully automated semiconductor etching tool, or a unique innovation, the company delivers quality solutions in a timely and cost-effective manner.

### Our Facilities

Operating across three Northeast facilities totaling 53,000 square feet, the company is equipped with five CNC machines, a CO<sub>2</sub> laser, 40 welding stations, and multiple butt welders to support precision fabrication.

### Key Equipment & Capabilities

- 1 – Anderson Exact 5’ x 10’ CNC Machining Center
- 1 – Anderson Exact Plus T.C. 5’ x 12’ CNC Machining Center
- 1 – Kern Laser 52’ x 100’, 400 watt CO<sub>2</sub> Laser
- 1 – Holz-her Precisions 5’ x 12’ Panel Saw
- 2 – Wegener Computer Controlled Butt Welding Machine for 10’ wide sheet
- 2 – 8’ x 10’ Flat Table Cutting Stations
- 2 – Pipe Fusion Systems
- 1 – Full Machine Shop
- 2 – DI Water Test Systems





## Markets We Serve

Plastic Design Ind. partners with customers across highly regulated and precision-driven industries. Our experience in cleanroom manufacturing, custom fabrication, and precision assembly allows us to support applications where performance, consistency, and compliance matter most.

### **Semiconductor**

We support semiconductor manufacturing with precision components built for cleanliness, chemical resistance, and dimensional stability. Our assemblies perform reliably in cleanrooms where contamination control is critical.

### **Biotechnology & Pharmaceutical**

We supply precision components for pharmaceutical and biotech cleanroom environments. Our parts meet GMP standards, ensuring contamination control, consistency, and compliance across research, development, and production.

### **Clinical Health Care**

We support clinical environments with components designed for hygiene, durability, and reliability. Our solutions meet strict standards, ensuring safe handling, easy cleaning, and consistent performance.

### **Medical & Life Sciences**

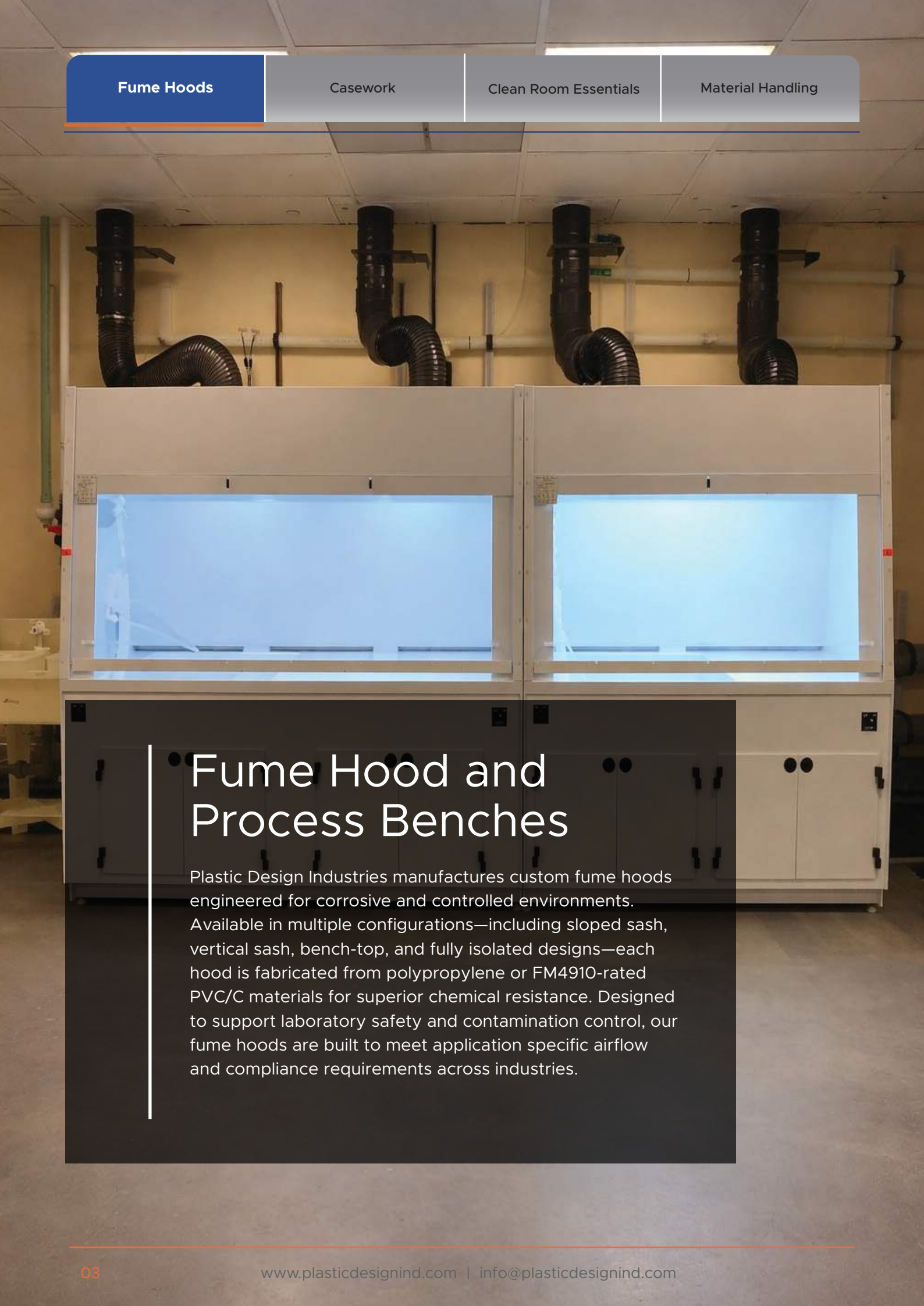
Our expertise in medical and life science environments enables us to deliver solutions supporting hygiene, durability, and reliability. We collaborate closely with customers to ensure compliance and functional performance.

### **Advanced Manufacturing**

Plastic Design Ind. supports advanced manufacturing with custom components tailored to specialized processes. Our design and assembly expertise delivers complex parts for diverse industrial applications.

### **Research & Development**

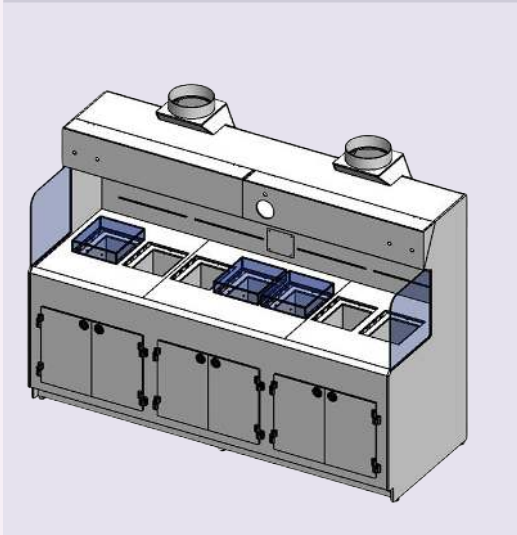
We partner with R&D teams to prototype and produce custom solutions aligned with evolving processes and technologies. Our flexible manufacturing approach supports early-stage development and scaled production.



## Fume Hood and Process Benches

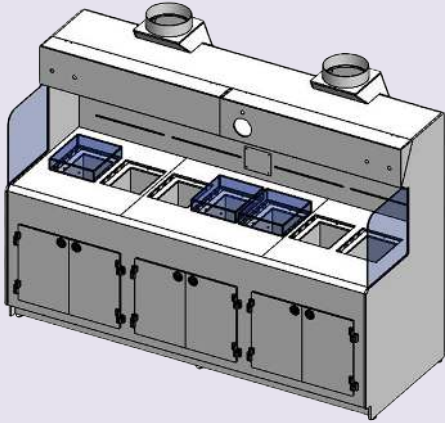
Plastic Design Industries manufactures custom fume hoods engineered for corrosive and controlled environments. Available in multiple configurations—including sloped sash, vertical sash, bench-top, and fully isolated designs—each hood is fabricated from polypropylene or FM4910-rated PVC/C materials for superior chemical resistance. Designed to support laboratory safety and contamination control, our fume hoods are built to meet application specific airflow and compliance requirements across industries.

## Fume Hoods



FH-4STD-FM4910	4ft. fm4910 Fume Hood
FH-4CSH-FM4910	4ft. fm4910 Console Fume Hood with Sash and Headcase
FH-4LE-FM4910	4ft. fm4910 Open Style Lip Exhaust Bench with Headcase
FH-4S-PP	4ft. Console Fume Hood with Sash
FH-4CSH-PP	4ft. Console Fume Hood with Sash and headcase
FH-4LE-PP	4ft. Open Style Lip Exhaust Bench with Headcase
FH-4SF-PP	4ft. Straight front Fume Hood
FH-6S-FM4910	6ft. Console Fume Hood with Sash
FH-6CSH-FM4910	6ft. Console Fume Hood with Sash and Headcase
FH-6LE-FM4910	6ft. Open Style Lip Exhaust with Headcase
FH-6S-PP	6ft. Console Fume Hood with Sash
FH-6CSH-PP	6ft. Console Fume Hood with Sash and Headcase
FH-6LE-PP	6ft. Open Style Lip Exhaust with Headcase
FH-6SF-PP	6ft. Straight Front Fume Hood
FH-6TT-PP	6ft. Table Top Fume Hood with Sash

## Fume Hoods



FH-8S-FM4910	8ft. Console Fume Hood with Sash
FH-8CSH-FM4910	8ft. Console Fume Hood with Sash and Headcase
FH-8LE-FM4910	8ft. Open Style Lip Exhaust with Headcase
FH-8S-PP	8ft. Console Fume Hood with Sash
FH-8CSH-PP	8ft. Console Fume Hood with Sash and Headcase
FH-8LE-PP	8ft. Open Style Lip Exhaust with Headcase
FH-8TT-PP	8ft. Table Top Fume Hood with Sash

## Casework

Plastic Design Industries fabricates custom plastic casework for cleanroom, laboratory, and corrosive environments. Constructed from polypropylene or FM4910-rated PVC/C materials, each unit features fully welded construction with no exposed metals. Designed for chemical resistance and cleanability, our casework supports regulatory compliance and operational durability. Configurations are custom-built to meet facility specifications and workflow requirements.

## 3-Drawer Combo Cabinets



		<b>L</b>	<b>W</b>	<b>D</b>
3DC-3029	3-Drawer Combo Cabinet	30 in	29 in	22 in
3DC-3629	3-Drawer Combo Cabinet	36 in	29 in	22 in
3DC-4229	3-Drawer Combo Cabinet	42 in	29 in	22 in
3DC-4829	3-Drawer Combo Cabinet	48 in	29 in	22 in
3DC-3035	3-Drawer Combo Cabinet	30 in	35 in	22 in
3DC-3635	3-Drawer Combo Cabinet	36 in	35 in	22 in
3DC-4235	3-Drawer Combo Cabinet	42 in	35 in	22 in
3DC-4835	3-Drawer Combo Cabinet	48 in	35 in	22 in

## 4-Drawer Combo Cabinets



		<b>L</b>	<b>W</b>	<b>D</b>
4DC-3029	4-Drawer Combo Cabinet	30 in	29 in	22 in
4DC-3629	4-Drawer Combo Cabinet	36 in	29 in	22 in
4DC-42229	4-Drawer Combo Cabinet	42 in	29 in	22 in
4DC-4829	4-Drawer Combo Cabinet	48 in	29 in	22 in
4DC-3035	4-Drawer Combo Cabinet	30 in	35 in	22 in
4DC-3635	4-Drawer Combo Cabinet	36 in	35 in	22 in
4DC-4235	4-Drawer Combo Cabinet	42 in	35 in	22 in
4DC-4835	4-Drawer Combo Cabinet	48 in	35 in	22 in

## 3-Drawer Basic Units



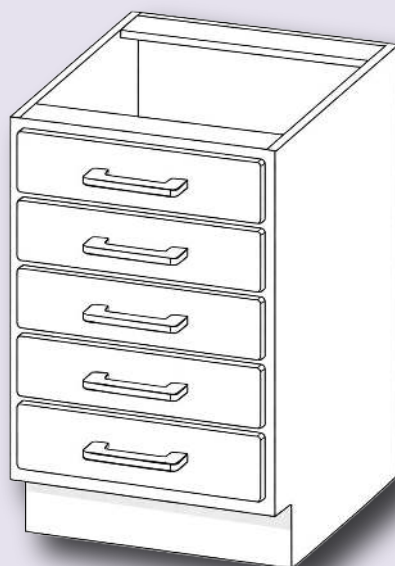
		<b>L</b>	<b>W</b>	<b>D</b>
3DB-1829	3-Drawer Basic Unit	18 in	29 in	22 in
3DB-2429	3-Drawer Basic Unit	24 in	29 in	22 in
3DB-3029	3-Drawer Basic Unit	30 in	29 in	22 in
3DB-3629	3-Drawer Basic Unit	36 in	29 in	22 in
3DB-1835	3-Drawer Basic Unit	18 in	35 in	22 in
3DB-2435	3-Drawer Basic Unit	24 in	35 in	22 in
3DB-33035	3-Drawer Basic Unit	30 in	35 in	22 in
3DB-3635	3-Drawer Basic Unit	36 in	35 in	22 in

## 4-Drawer Basic Units



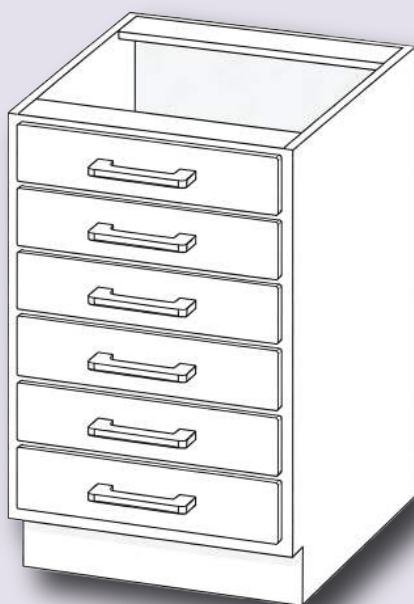
		<b>L</b>	<b>W</b>	<b>D</b>
4DB-1829	4-Drawer Basic Unit	18 in	29 in	22 in
4DB-2429	4-Drawer Basic Unit	24 in	29 in	22 in
4DB-3029	4-Drawer Basic Unit	30 in	29 in	22 in
4DB-3629	4-Drawer Basic Unit	36 in	29 in	22 in
4DB-1835	4-Drawer Basic Unit	18 in	35 in	22 in
4DB-2435	4-Drawer Basic Unit	24 in	35 in	22 in
4DB-3035	4-Drawer Basic Unit	30 in	35 in	22 in
4DB-3635	4-Drawer Basic Unit	36 in	35 in	22 in

## 5-Drawer Basic Units



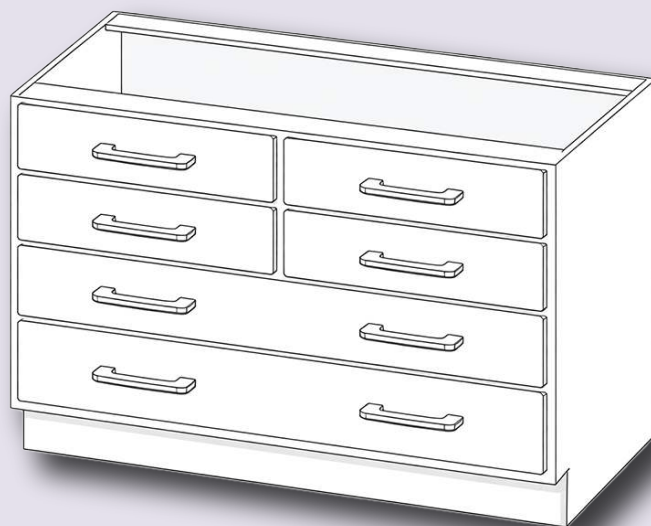
		<b>L</b>	<b>W</b>	<b>D</b>
5DB-1829	5-Drawer Basic Unit	18 in	29 in	22 in
5DB-2429	5-Drawer Basic Unit	24 in	29 in	22 in
5DB-3029	5-Drawer Basic Unit	30 in	29 in	22 in
5DB-3629	5-Drawer Basic Unit	36 in	29 in	22 in
5DB-1835	5-Drawer Basic Unit	18 in	35 in	22 in
5DB-2435	5-Drawer Basic Unit	24 in	35 in	22 in
5DB-3035	5-Drawer Basic Unit	30 in	35 in	22 in
5DB-3635	5-Drawer Basic Unit	36 in	35 in	22 in

## 6-Drawer Basic Units



		<b>L</b>	<b>W</b>	<b>D</b>
6DB-1829	6-Drawer Basic Unit	18 in	29 in	22 in
6DB-2429	6-Drawer Basic Unit	24 in	29 in	22 in
6DB-3029	6-Drawer Basic Unit	30 in	29 in	22 in
6DB-3629	6-Drawer Basic Unit	36 in	29 in	22 in
6DB-1835	6-Drawer Basic Unit	18 in	35 in	22 in
6DB-2435	6-Drawer Basic Unit	24 in	35 in	22 in
6DB-3035	6-Drawer Basic Unit	30 in	35 in	22 in
6DB-3635	6-Drawer Basic Unit	36 in	35 in	22 in

## 6-Drawer Combo Units



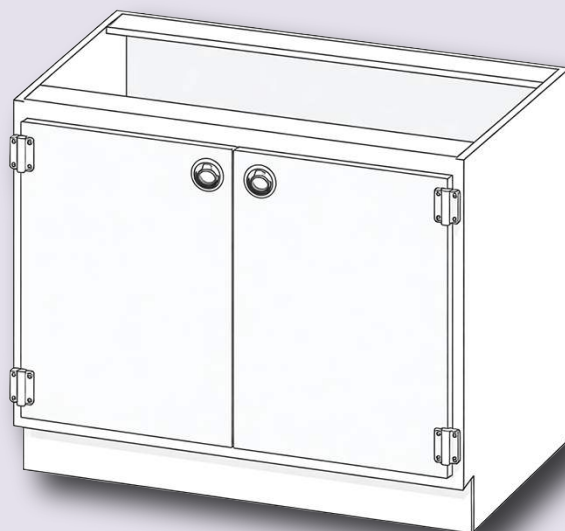
		<b>L</b>	<b>W</b>	<b>D</b>
6DC-3629	6-Drawer Combo Unit	36 in	29 in	22 in
6DC-4229	6-Drawer Combo Unit	42 in	29 in	22 in
6DC-4829	6-Drawer Combo Unit	48 in	29 in	22 in
6DC-3635	6-Drawer Combo Unit	36 in	35 in	22 in
6DC-4235	6-Drawer Combo Unit	42 in	35 in	22 in
6DC-4835	6-Drawer Combo Unit	48 in	35 in	22 in

## 8-Drawer Basic Unit



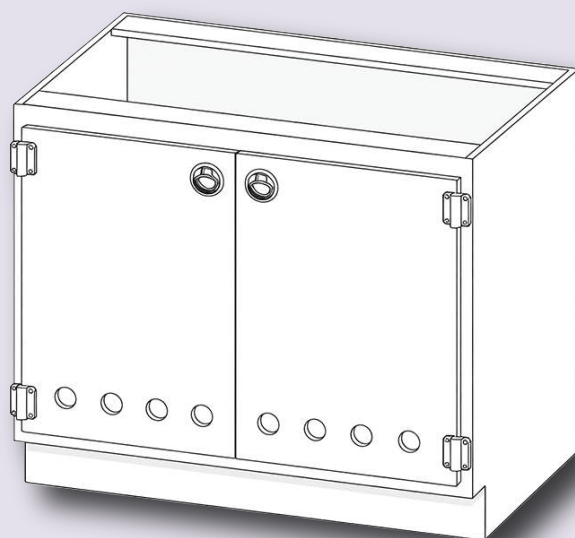
		<b>L</b>	<b>W</b>	<b>D</b>
6DB-3629	8-Drawer Basic Unit	36 in	29 in	22 in
6DB-4229	8-Drawer Basic Unit	42 in	29 in	22 in
6DB-4829	8-Drawer Basic Unit	48 in	29 in	22 in
6DB-3635	8-Drawer Basic Unit	36 in	35 in	22 in
6DB-4235	8-Drawer Basic Unit	42 in	35 in	22 in
6DB-4835	8-Drawer Basic Unit	48 in	35 in	22 in

## Double Door Storage Units



		<b>L</b>	<b>W</b>	<b>D</b>
2DR-3029	Double Door Storage Unit	30 in	29 in	22 in
2DR-3629	Double Door Storage Unit	36 in	29 in	22 in
2DR-4229	Double Door Storage Unit	42 in	29 in	22 in
2DR-4829	Double Door Storage Unit	48 in	29 in	22 in
2DR-3035	Double Door Storage Unit	30 in	35 in	22 in
2DR-3635	Double Door Storage Unit	36 in	35 in	22 in
2Dr-4235	Double Door Storage Unit	42 in	35 in	22 in
2DR-4835	Double Door Storage Unit	48 in	35 in	22 in

## Double Door Vented Storage Units



		<b>L</b>	<b>W</b>	<b>D</b>
2DV-3029	Double Door Vented Storage Unit	30 in	29 in	22 in
2DV-3629	Double Door Vented Storage Unit	36 in	29 in	22 in
2DV-4229	Double Door Vented Storage Unit	42 in	29 in	22 in
2DV-4829	Double Door Vented Storage Unit	48 in	29 in	22 in
2DV-3035	Double Door Vented Storage Unit	30 in	35 in	22 in
2DV-3635	Double Door Vented Storage Unit	36 in	35 in	22 in
2DV-4235	Double Door Vented Storage Unit	42 in	35 in	22 in
2DV-4835	Double Door Vented Storage Unit	48 in	35 in	22 in

## Knee Space Open Base Cabinets



		<b>L</b>	<b>W</b>	<b>D</b>
KC-1829	Knee Space Unit	18 in	29 in	22 in
KC-2429	Knee Space Unit	24 in	29 in	22 in
KC-3029	Knee Space Unit	30 in	29 in	22 in
KC-3629	Knee Space Unit	36 in	29 in	22 in
KC-1835	Knee Space Unit	18 in	35 in	22 in
KC-2435	Knee Space Unit	24 in	35 in	22 in
KC-3035	Knee Space Unit	30 in	35 in	22 in
KC-3635	Knee Space Unit	36 in	35 in	22 in

## Single Drawer Cabinet Combo Units



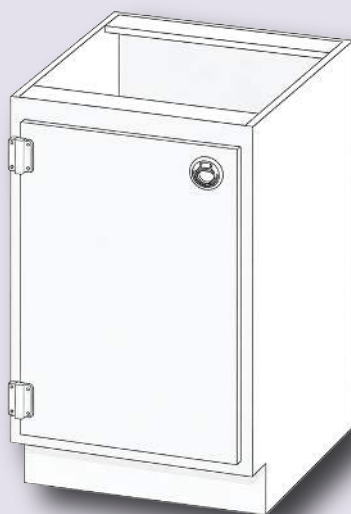
		<b>L</b>	<b>W</b>	<b>D</b>
1DRC-1829-L	Single Drawer Cabinet Combo Unit	18 in	29 in	22 in
1DRC-1829-R	Single Drawer Cabinet Combo Unit	18 in	29 in	22 in
1DRC-2429-L	Single Drawer Cabinet Combo Unit	24 in	29 in	22 in
1DRC-2429-R	Single Drawer Cabinet Combo Unit	24 in	29 in	22 in
1DRC-3029	Single Drawer Cabinet Combo Unit	30 in	35 in	22 in
1DRC-3629	Single Drawer Cabinet Combo Unit	36 in	35 in	22 in
1DRC-1835-L	Single Drawer Cabinet Combo Unit	18 in	35 in	22 in
1DRC-1835-R	Single Drawer Cabinet Combo Unit	18 in	35 in	22 in
1DRC-1835-R	Single Drawer Cabinet Combo Unit	24 in	29 in	22 in
1DRC-1835-R	Single Drawer Cabinet Combo Unit	24 in	29 in	22 in
1DRC-1835-R	Single Drawer Cabinet Combo Unit	30 in	29 in	22 in
1DRC-1835-R	Single Drawer Cabinet Combo Unit	36 in	29 in	22 in

## Double Drawer Cabinet Combo Units



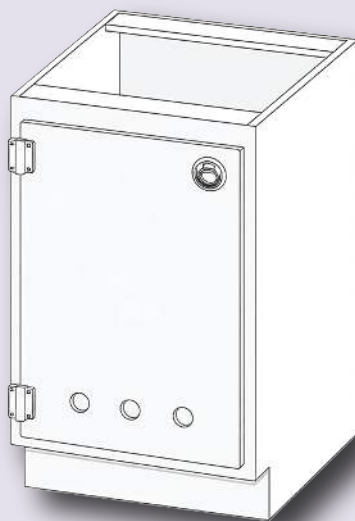
		<b>L</b>	<b>W</b>	<b>D</b>
2DRC-3029	Double Drawer Cabinet Combo Unit	30 in	29 in	22 in
2DRC-3629	Double Drawer Cabinet Combo Unit	36 in	29 in	22 in
2DRC-4229	Double Drawer Cabinet Combo Unit	42 in	29 in	22 in
2DRC-4829	Double Drawer Cabinet Combo Unit	48 in	29 in	22 in
2DRC-3035	Double Drawer Cabinet Combo Unit	30 in	35 in	22 in
2DRC-3635	Double Drawer Cabinet Combo Unit	36 in	35 in	22 in
2DRC-4235	Double Drawer Cabinet Combo Unit	42 in	35 in	22 in
2DRC-4835	Double Drawer Cabinet Combo Unit	48 in	35 in	22 in

## Single Door Storage Cabinets



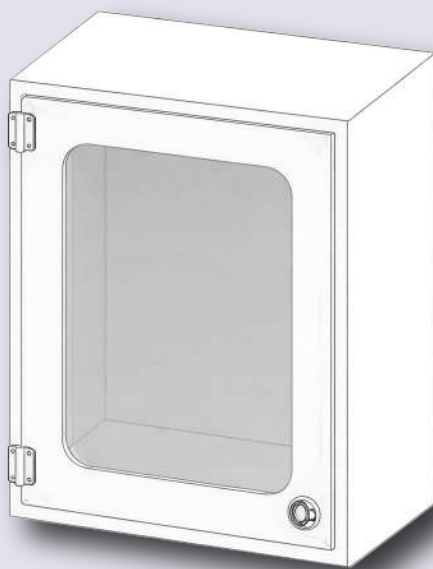
		<b>L</b>	<b>W</b>	<b>D</b>
1DR-1829-L	Single Door Storage Cabinet	18 in	29 in	22 in
1DR-1829-R	Single Door Storage Cabinet	18 in	29 in	22 in
1DR-2429-L	Single Door Storage Cabinet	24 in	29 in	22 in
1DR-2429-R	Single Door Storage Cabinet	24 in	29 in	22 in
1DR-3029-L	Single Door Storage Cabinet	30 in	29 in	22 in
1DR-3629-R	Single Door Storage Cabinet	36 in	29 in	22 in
1DR-1835-L	Single Door Storage Cabinet	18 in	35 in	22 in
1DR-1835-R	Single Door Storage Cabinet	18 in	35 in	22 in
1DR-2435-L	Single Door Storage Cabinet	24 in	35 in	22 in
1DR-2435-R	Single Door Storage Cabinet	24 in	35 in	22 in
1DR-3035-L	Single Door Storage Cabinet	30 in	35 in	22 in
1DR-3035-R	Single Door Storage Cabinet	36 in	35 in	22 in

## Single Door Vented Storage Cabinets



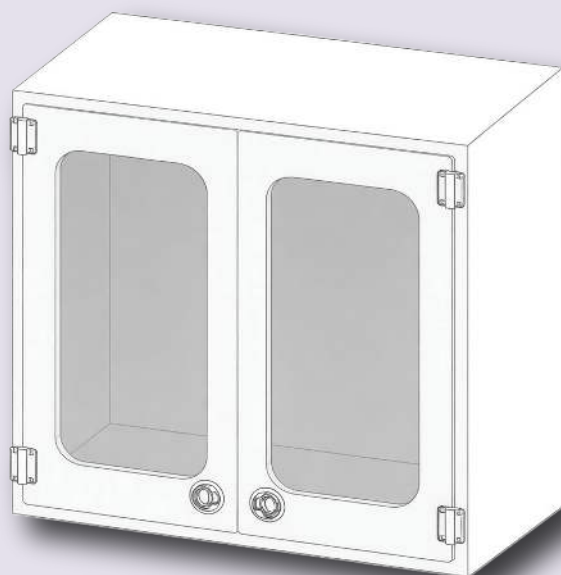
		<b>L</b>	<b>W</b>	<b>D</b>
1DRV-1829-L	Single Door Vented Storage Cabinet	18 in	29 in	22 in
1DRV-1829-R	Single Door Vented Storage Cabinet	18 in	29 in	22 in
1DRV-2429-L	Single Door Vented Storage Cabinet	24 in	29 in	22 in
1DRV-2429-R	Single Door Vented Storage Cabinet	24 in	29 in	22 in
1DRV-3029-L	Single Door Vented Storage Cabinet	30 in	29 in	22 in
1DRV-3029-R	Single Door Vented Storage Cabinet	36 in	29 in	22 in
1DRV-1835-L	Single Door Vented Storage Cabinet	18 in	35 in	22 in
1DRV-1835-R	Single Door Vented Storage Cabinet	18 in	35 in	22 in
1DRV-2435-L	Single Door Vented Storage Cabinet	24 in	35 in	22 in
1DRV-2435-R	Single Door Vented Storage Cabinet	24 in	35 in	22 in
1DRV-3035	Single Door Vented Storage Cabinet	30 in	35 in	22 in
1DRV-3635	Single Door Vented Storage Cabinet	36 in	35 in	22 in

## Single Door Wall Units with Window



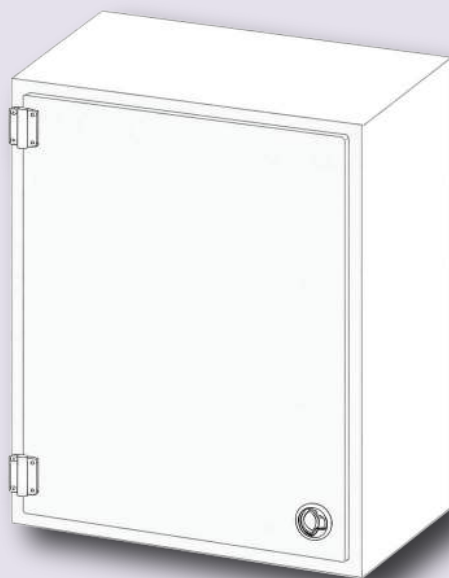
		<b>L</b>	<b>W</b>	<b>D</b>
1DWW-1829-L	Single Door Wall Unit with Window	18 in	29 in	12 in
1DWW-1829-R	Single Door Wall Unit with Window	18 in	29 in	12 in
1DWW-2429-L	Single Door Wall Unit with Window	24 in	29 in	12 in
1DWW-1835-L	Single Door Wall Unit with Window	18 in	29 in	12 in
1DWW-1835-R	Single Door Wall Unit with Window	18 in	35 in	12 in
1DWW-2435-L	Single Door Wall Unit with Window	24 in	35 in	12 in
1DWW-2435-R	Single Door Wall Unit with Window	24 in	35 in	12 in

## Double Door Wall Units with Window



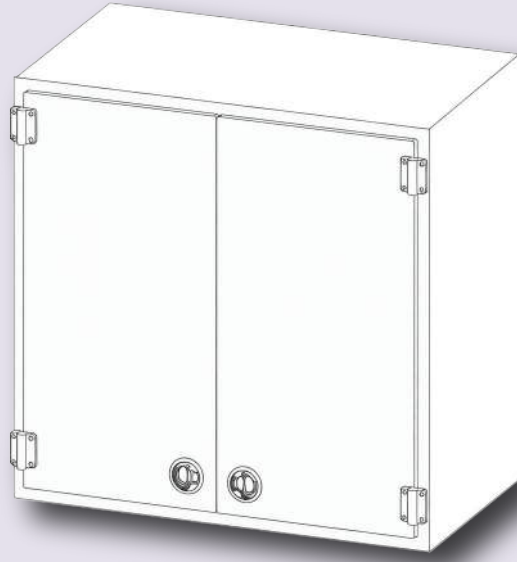
		<b>L</b>	<b>W</b>	<b>D</b>
2DWW-3029	Double Door Wall Unit with Window	30 in	29 in	12 in
2DWW-3629	Double Door Wall Unit with Window	36 in	29 in	12 in
2DWW-4229	Double Door Wall Unit with Window	42 in	29 in	12 in
2DWW-4829	Double Door Wall Unit with Window	48 in	29 in	12 in
2DWW-3035	Double Door Wall Unit with Window	30 in	35 in	12 in
2DWW-3635	Double Door Wall Unit with Window	36 in	35 in	12 in
2DWW-4235	Double Door Wall Unit with Window	42 in	35 in	12 in
2DWW-4835	Double Door Wall Unit with Window	48 in	35 in	12 in

## Single Door Wall Units



		<b>L</b>	<b>W</b>	<b>D</b>
1DW-1829-L	Single Door Wall Units	18 in	29 in	12 in
1DW-1829-R	Single Door Wall Units	18 in	29 in	12 in
1DW-2429-L	Single Door Wall Units	24 in	29 in	12 in
1DW-2429-R	Single Door Wall Units	24 in	29 in	12 in
1DW-1835-L	Single Door Wall Units	18 in	35 in	12 in
1DW-1835-R	Single Door Wall Units	18 in	35 in	12 in
1DW-2435-L	Single Door Wall Units	24 in	35 in	12 in
1DW-2435-R	Single Door Wall Units	24 in	35 in	12 in

## 12 Inch (in) Depth Double Door Wall Units



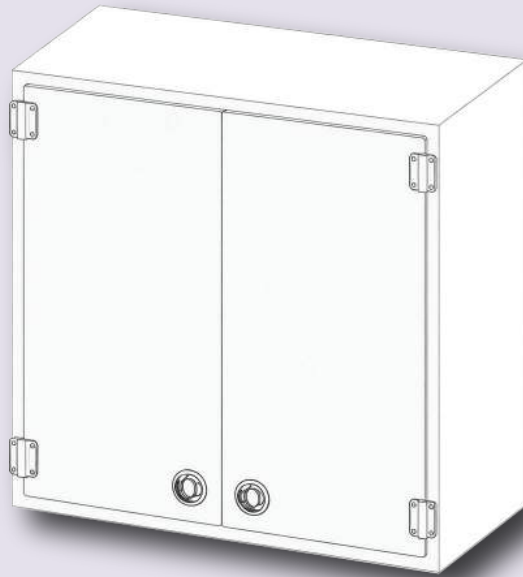
		<b>L</b>	<b>W</b>	<b>D</b>
2DW12-3029	Double Door Wall Unit	30 in	29 in	12 in
2DW12-3629	Double Door Wall Unit	36 in	29 in	12 in
2DW12-4229	Double Door Wall Unit	42 in	29 in	12 in
2DW12-4829	Double Door Wall Unit	48 in	29 in	12 in
2DW12-3035	Double Door Wall Unit	30 in	35 in	12 in
2DW12-3635	Double Door Wall Unit	36 in	35 in	12 in
2DW12-4235	Double Door Wall Unit	42 in	35 in	12 in
2DW12-4835	Double Door Wall Unit	48 in	35 in	12 in

## Wall Units with Sliding Doors



		<b>L</b>	<b>W</b>	<b>D</b>
SDW-3029	Wall Unit with Sliding Door	30 in	29 in	22 in
SDW-3629	Wall Unit with Sliding Door	36 in	29 in	22 in
SDW-4229	Wall Unit with Sliding Door	42 in	29 in	22 in
SDW-4829	Wall Unit with Sliding Door	48 in	29 in	22 in
SDW-3035	Wall Unit with Sliding Door	30 in	35 in	22 in
SDW-3635	Wall Unit with Sliding Door	36 in	35 in	22 in
SDW-4235	Wall Unit with Sliding Door	42 in	35 in	22 in
SDW-4835	Wall Unit with Sliding Door	48 in	35 in	22 in

## 22 Inch (in) Depth Double Door Wall Units



		<b>L</b>	<b>W</b>	<b>D</b>
2DW22-3029	Depth Double Door Wall Unit	30 in	29 in	22 in
2DW22-3629	Depth Double Door Wall Unit	36 in	29 in	22 in
2DW22-4229	Depth Double Door Wall Unit	42 in	29 in	22 in
2DW22-4829	Depth Double Door Wall Unit	48 in	29 in	22 in
2DW22-3035	Depth Double Door Wall Unit	30 in	35 in	22 in
2DW22-3635	Depth Double Door Wall Unit	36 in	35 in	22 in
2DW22-4235	Depth Double Door Wall Unit	42 in	35 in	22 in
2DW22-4835	Depth Double Door Wall Unit	48 in	35 in	22 in

## Clean Room Essentials

Plastic Design Industries manufactures cleanroom equipment engineered to support contamination control, chemical resistance, and long-term durability in regulated environments. Fabricated from high-performance plastics including polypropylene and FM4910-rated materials, our solutions withstand aggressive cleaning protocols and corrosive exposure.

Clean Room Essentials include facility components, organizational systems, pass-through units, wash stations, and gowning support equipment designed for integration into new or existing cleanroom layouts. Each system is custom-built to meet application-specific requirements while maintaining compliance with industry standards.



# Facility Components

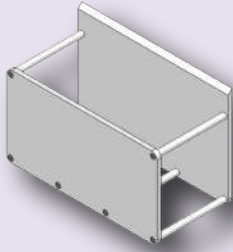
## 1. Organizational Components

Plastic Design Industries designs and fabricates wall-mounted organizational components that support cleanliness, compliance, and efficient workflow in clean-room and controlled environments. Constructed from chemical-resistant plastics such as polypropylene and FM4910-rated materials, these systems withstand aggressive cleaning protocols while maintaining structural integrity. Solutions include shelving, dispensers, storage units, and custom wall-mounted configurations tailored to facility requirements.

Each component is engineered to reduce clutter, improve accessibility, and support contamination control procedures. Designed for biotech, pharmaceutical, semiconductor, healthcare, and laboratory settings, our organizational systems integrate seamlessly into new or existing clean-room layouts while promoting long-term durability and operational efficiency.

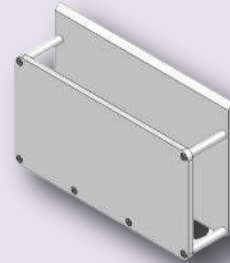
## Organizational Components

### Binder Holders



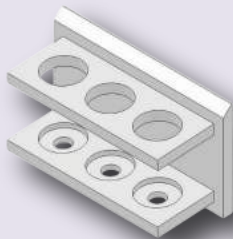
CRE-BH-1308038  
12.25 in | 8 in | 2.75 in

### Binder Holders



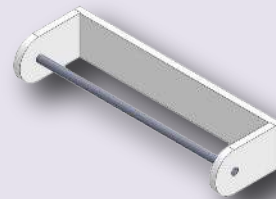
CRE-BH-130806  
12.25 in | 8 in | 6 in

### Sanitizing Components



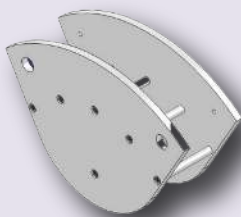
CRE-HSS-050902  
5 | 9 | 2

### Sanitizing Components



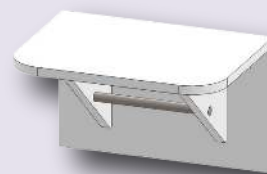
CRE-sBH-030516  
3 | 5.25 | 16

### Hose Racks



CRE-HR-1511  
15.75 | 10

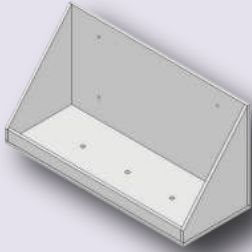
### Quarter Ceiling Tile Access Panel



CRE-CT-1224  
11.75 in | 23.75 in

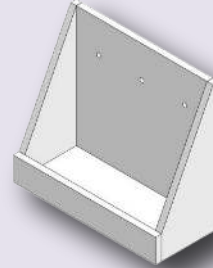
## Organizational Components

### Wall-Mounted Shelves



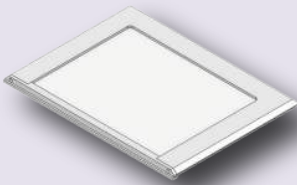
CRE-sH-092412  
9 | 24 | 12

### Wall-Mounted Shelves



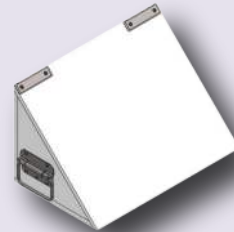
CRE-sH-090408  
9 | 4 | 8

### Sign Holder



CRE-LSH-0811  
8.5 | 11

### Waste Basket



CRE-WBH-201212  
20 | 12 | 12

### Waste



CRE-TB-242042  
20 | 20 | 42

# Facility Components

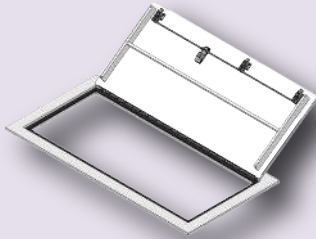
## 2. Access Panels & Pass-Through Systems

Plastic Design Industries designs and manufactures ceiling access panels and pass-through systems for cleanroom and controlled environments requiring repeated wash-down, sterilization, and contamination control. Constructed from durable, chemical-resistant, non-corrosive materials, these solutions support pharmaceutical, biotech, semiconductor, and laboratory applications where cleanliness and reliability are critical.

Engineered for seamless integration, access panels provide secure, easy-open entry to utilities, while pass-through systems enable controlled material transfer between classified spaces. Configurable to facility specifications, both solutions support contamination control, workflow efficiency, regulatory compliance, and long-term performance in critical environments.

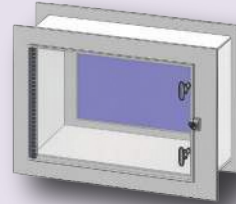
## Access Panels & Pass-Through Systems

### Standard Ceiling Tile Access Panel



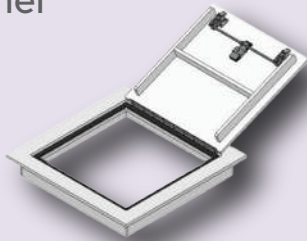
CRE-CT-2448  
23.75 in | 47.75 in

### Pass-Through 30 inch



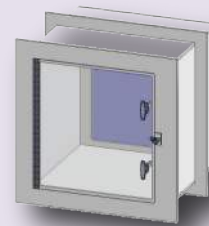
CRE-PTH-302018  
30 | 20 | 18

### Half Ceiling Tile Access Panel



CRE-CT-2424  
23.75 in | 23.75 in

### Pass-Through 24 inch



CRE-PTH-242424  
24 | 24 | 24

### Quarter Ceiling Tile Access Panel



CRE-CT-1224  
11.75 in | 23.75 in



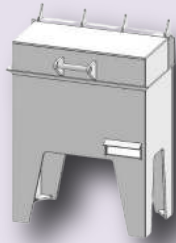
## Facility Components

### 3. Wash Stations

Plastic Design Industries provides bottle wash stations designed to support cleanliness, regulatory compliance, and controlled chemical disposal processes within cleanroom and laboratory environments. Available as automated bottle wash systems or sink-based configurations, these units deliver controlled interior and exterior rinsing to promote consistent, repeatable cleaning performance. Fabricated from durable, chemical-resistant plastics such as polypropylene, each system withstands aggressive cleaning protocols and corrosive exposure. Wash stations can be customized to meet facility layout and process requirements. Designed for pharmaceutical, semiconductor, biotech, and laboratory applications, these systems support contamination control while improving operational efficiency and safety.

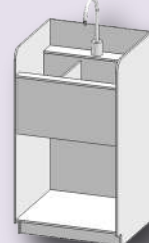
## Wash Stations

### Carboy Bottle Washing Station



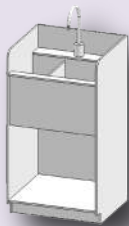
CRE-BW-363660  
36 in | 36 in | 60 in

### 6 Position Gallon Bottle Washing Station



CRE-BW-362048  
36 in | 20 in | 48 in

### Glove Wash Sink



CRE-BWS-201836  
20 | 18 | 36

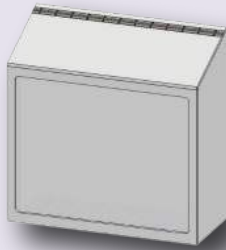
# PPE/ Gowning

## 1. Gowning Solutions & Foot Protection

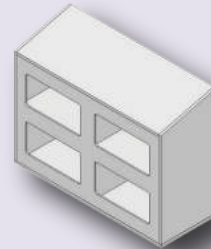
Integrated gowning and foot protection systems designed to support cleanroom entry protocols, organized PPE access, and contamination control within pharmaceutical, semiconductor, laboratory, and controlled environments.

## Bootie Dispensers

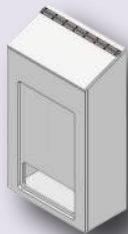
Wall-mounted or free-standing bootie dispensers provide controlled, organized access to shoe covers, supporting compliant gowning procedures and contamination prevention in cleanroom environments.



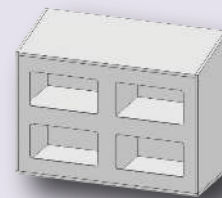
CRE-BD-241024  
24 in | 10 in | 24 in



CRE-BD-123224  
12 in | 32 in | 24 in



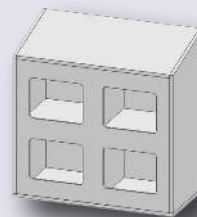
CRE-BD-151027  
15 in | 10 in | 27 in



CRE-BD-151027  
15 in | 10 in | 27 in



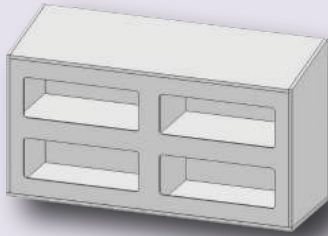
CRE-BD-120616  
12 in | 6 in | 16 in



CRE-BD-122424  
12 in | 24 in | 24 in

## Bootie Dispensers

### Bootie Dispenser



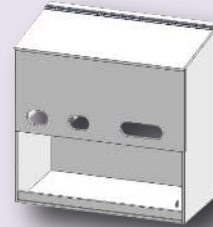
CRE-BD-144224

14 in | 42 in | 24 in

CRE-BD-143224

14 in | 32 in | 24 in

### Hairnet, Facemask & Bootie Dispenser - 3/8" WPP



CRE-HFB-142413

14 | 24 | 13

## Gowning

Cleanroom gowning systems organize PPE storage and distribution, promoting efficient entry workflows and contamination control for regulated environments like biotech, pharmaceutical, semiconductor, and laboratory facilities.

### Gowning Dispenser



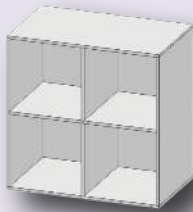
CRE-GD-242440  
24 | 24 | 40

### Gowning Cabinet Single Door



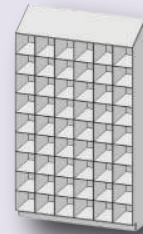
CRE-LH-151978      CRE-LH-181872  
15 in | 18.625 in | 78 in      18 in | 18 in | 72 in

### Gowning Bin



CRE-GBC-202012  
20 | 12 | 12

### Footwear Storage Control



CRE-SB-541690  
54 | 16 | 90

### Gowning Cabinet Double Door



CRE-GC-362478  
Constructed from 3/8" thick white polypropylene

### Footwear Storage Control



CRE-SHS-541690  
54 | 16 | 90



## PPE/ Gowning

### 2. Hand Protection & Sanitization

Glove dispensers and sanitization stations provide organized access to hand protection while supporting hygiene standards, contamination control protocols, and cleanroom compliance in regulated environments.

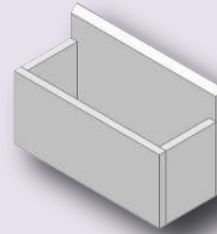
## Hand Protection & Sanitization

TEX Wipe Holder



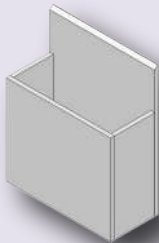
CRE-BWH-160312  
16 | 3.75 | 12

Eyeglass Wipe Dispenser



CRE-EWD-080305  
8 | 3.5 | 5

TEX Wipe Holder



CRE-TWH-100409  
10.5 | 4 | 9

Towel Holder



CRE-GLD-100409  
10 | 4 | 9



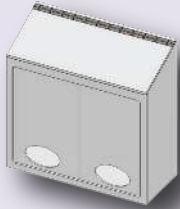
## PPE/ Gowning

### 3. | Head and Face Protectors

Head and face protection dispensers provide organized storage and controlled access to hair nets, beard covers, and face masks, supporting contamination control and cleanroom compliance.

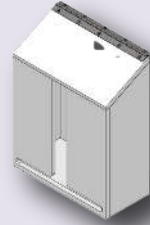
## Head and Face Protectors

### Hair Net/Beard Cover Dispensers



CRE-HBD-241024  
24 | 10 | 24

### Mask Dispenser



CRE-FMD-090411  
9.25 in | 4.75 in | 11.75 in

### Face Mask Dispensers



CRE-FMD-130610  
12.5 in | 6 in | 10 in

### Safety Glass Dispenser



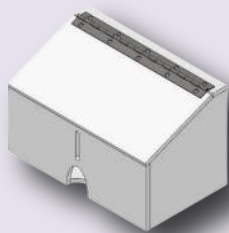
CRE-SGD-080405  
Easy to fill, easy to clean with clear acrylic sliding door to prevent glasses from falling out.

# PPE/ Gowning

## 4. Personal Item Control

Personal item control solutions help maintain cleanroom compliance by isolating non-cleanroom belongings prior to entry, supporting contamination control and structured gowning procedures in controlled environments.

### Cell Phone Bag Dispenser



CRE-BD-090506  
9.125 | 5.125 | 5.5

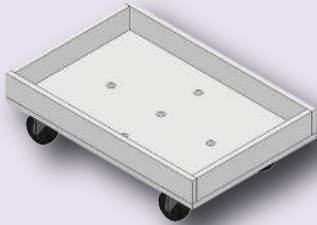


## Material Handling

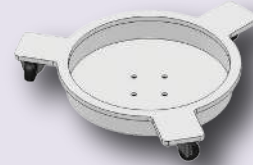
Plastic Design Industries manufactures chemical-resistant material handling systems engineered for controlled and corrosive environments. Fabricated from fully welded polypropylene with no exposed metals, our carts and dollies support contamination control while maintaining structural integrity under daily operational loads. Designed for chemical segregation, stability, and cleanability, these systems integrate seamlessly into semiconductor, pharmaceutical, biotech, and laboratory facilities where compliance and process reliability are critical.

## DOLLIES

The Plastic Design Industries Line of Carts and Dollies are not only functional but also cleanable. Constructed of Durable Polypropylene each unit can be wiped down to keep up with cleaning compliance while being durable enough to withstand the day to day use.

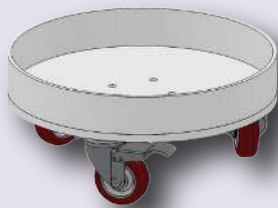


MH-CD-15102  
15 in | 10 in | 2 in

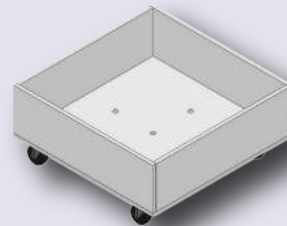


MH-CD-1503  
15 in | N/A | 3 in

MH-CD-1203  
12 in | N/A | 3 in



MH-CD-1703  
16.5 in | N/A | 3 in

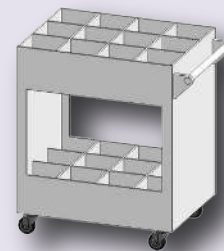


MH-SQD-16165  
16 in | 16 in | 5 in

## CARTS

The importance of chemical carts is paramount for the user. This allows for the transfer of chemicals safely and efficiently. The need for a divided area where bottles are not able to touch is also important to keep bottles from touching. When these bottles are glass it is even more important to help eliminate breakage and spills.

### Chemical Cart (24 Bottle, 1 gal)



MH-CC-322440  
32 in | 24 in | 40 in

# ENGINEERING & QUALITY CAPABILITIES



At Plastic Design Industries, precision is built into every step. Our engineering and manufacturing teams work hand in hand to deliver custom plastic systems for the most demanding environments.



## Engineering & Design

We bring your concepts to life with advanced design capabilities using **SolidWorks and AutoCAD**. From initial prototypes to fully integrated systems, we engineer scalable solutions tailored to process requirements, ensuring performance, efficiency, reliability, and execution.



## Manufacturing Infrastructure

Our state-of-the-art **53,000 sq. ft.** dedicated to manufacturing features cutting-edge equipment: CNC machining, large format cutting, nitrogen assisted welding, thermal forming, and pipe fusion systems. Every step is completed ensuring full control over quality and timing.



## Quality & Compliance

PDI is committed to delivering uncompromising quality. Our processes are **ISO 9001:2015 certified and IPC-A-620** compliant, conforming to industry recognized standards. Every project undergoes rigorous inspection, testing, and validation to guarantee precision, consistency, reliability, and repeatable results across all deliverables.

Built for Corrosive Environments. Engineered for Controlled Facilities.  
Manufactured for Long-Term Performance.



# LET'S BUILD YOUR NEXT CUSTOM SYSTEM

**Plastic Design Industries** partners with semiconductor, pharmaceutical, biotechnology, and advanced manufacturing teams to design and fabricate custom thermoplastic systems engineered for performance, compliance, and long-term durability.

From prototype to full production, our team delivers precision fabrication solutions built to meet the demands of highly regulated environments.

Whether you require a custom polypropylene wet bench, cleanroom cabinetry, process equipment, or fully integrated fabrication systems, our engineering and manufacturing team is ready to support your application.

Discuss your requirements with our specialists and explore a solution tailored to your environment.

## Certified Quality & Manufacturing Excellence



IPC-A-620 Certified



ISO 9001:2015



MADE IN USA

## Contact Information

Phone: 978.251.4830

Email: [info@plasticdesignind.com](mailto:info@plasticdesignind.com)

Website: [www.plasticdesignind.com](http://www.plasticdesignind.com)

Plastic Design Industries

180 Middlesex Street,

North Chelmsford, MA 01863



Clean Room Only